



Flood Risk Management Local Perspectives

November 2nd, 2011

Robert Turner, P.E., Executive Director

Southeast Louisiana Flood Protection Authority - East

Timothy P. Doody, President • John M. Barry, Vice President • Stephen Estopinal, P.E., P.L.S., Treasurer
Louis E. Wittie, P.E., Secretary • David P. Barnes, Jr. • Thomas L. Jackson, P.E.
Ricardo S. Pineda, P.E. • George Losonsky, Ph.D • G. Paul Kemp, Ph.D.

Presentation Outline

- Southeast Louisiana Flood Protection Authority - East
- Local Challenges
- Meeting the Challenges
- Questions and Discussion

Lessons Learned

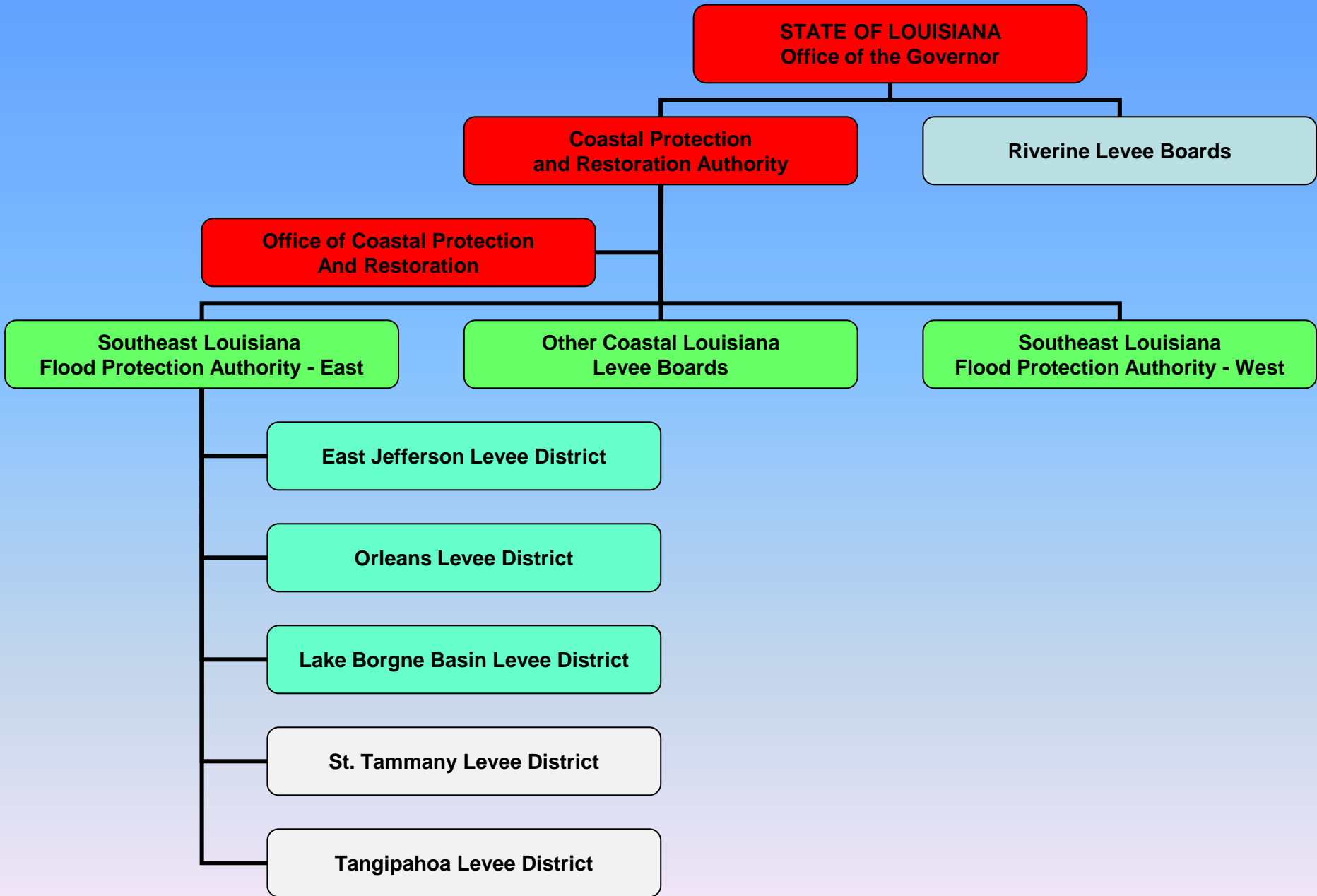
- FEMA Levee Accreditation does not equal flood protection
- A proactive approach is much less expensive than a reactive approach
- Flood Risk Reduction is a shared responsibility
- Flood Risk Reduction and Environmental Restoration/Preservation are not mutually exclusive
- Water respects no political boundaries

A New Approach to Flood Risk Management

- Establishment of Louisiana Coastal Protection and Restoration Authority (2006)
 - Non Federal Sponsor on HSDRRS Projects
 - Development of Coastal Protection and Restoration Master Plan
 - Provide oversight over coastal levee districts
- Levee Board Consolidation (2007)
 - System Approach

Southeast Louisiana Flood Protection Authority - East

- Created by Act of Louisiana State Legislature in 2006
- Governed by a 9 member Board of Commissioners appointed by the Governor of Louisiana
- Board of Commissioners governs 5 levee districts (only 3 active at present time)
- Oversight provided by the Louisiana Coastal Protection and Restoration Authority



Regional Flood Risk Management



Lake Pontchartrain

East Jefferson
Levee District

Orleans Levee District

Lake
Borgne

Lake Borgne Basin
Levee District

Thinking and acting regionally

Pre-Katrina Infrastructure (EJLD, OLD, LBBLD)



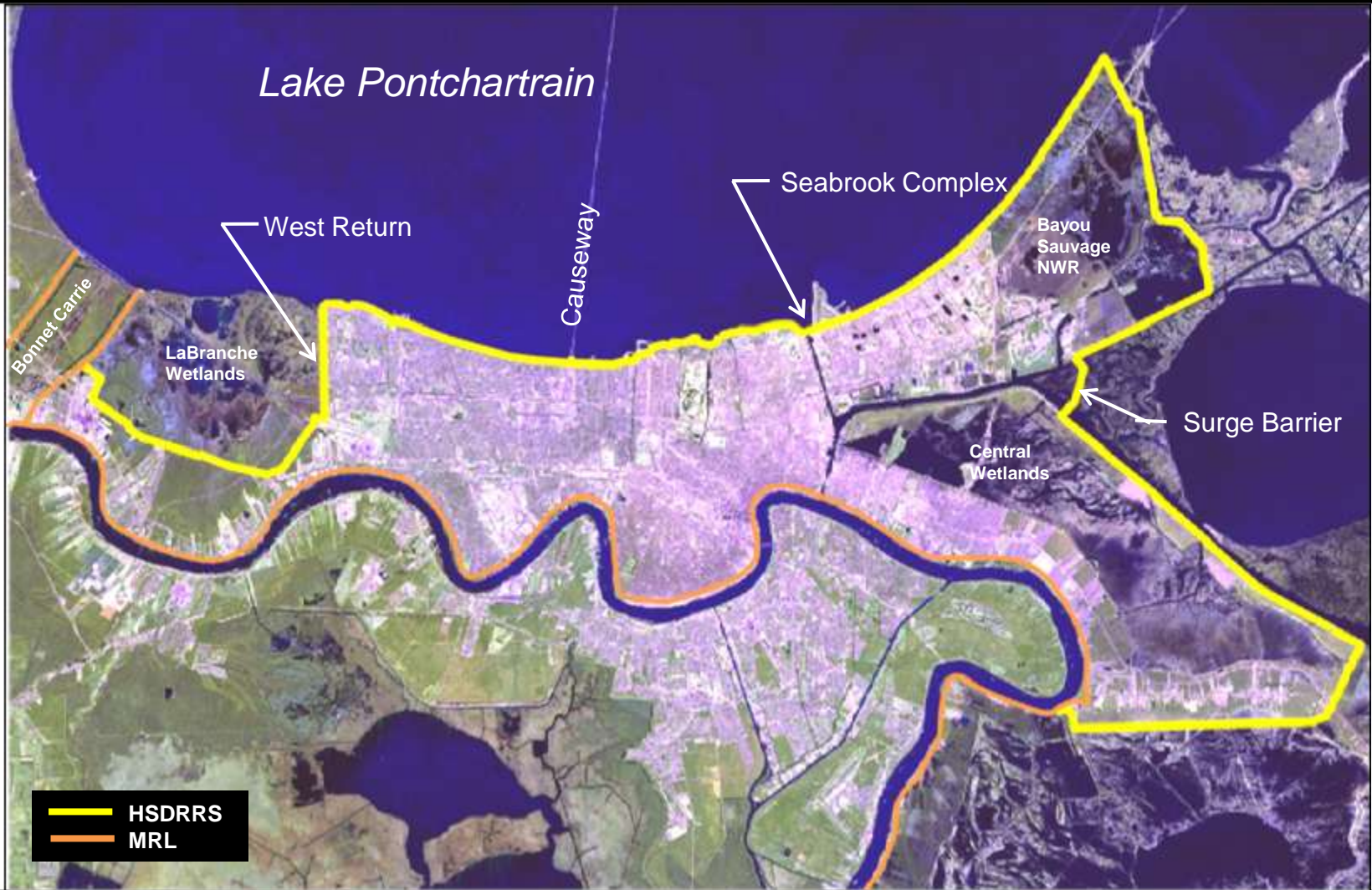
- 195 miles of levees and floodwalls
- 5.4 miles of seawall
- 223 floodgates
- 109 valves
- 3 control structures (sector gates)
- 1 fresh water diversion siphon
- 53 miles of drainage channels
- 8 major drainage pump stations

New Infrastructure



- IHNC-Lake Borgne Storm Surge Barrier
- Seabrook Complex
- Dupre and Caernarvon Control Structures (Sector Gates)
- Concrete T-Wall (floodwall)
- Additional Floodgates
- Breakwater Structures, Foreshore Protection and Wetland Restoration Projects

East Bank Perimeter “System”



Thinking and acting regionally

Challenges Ahead



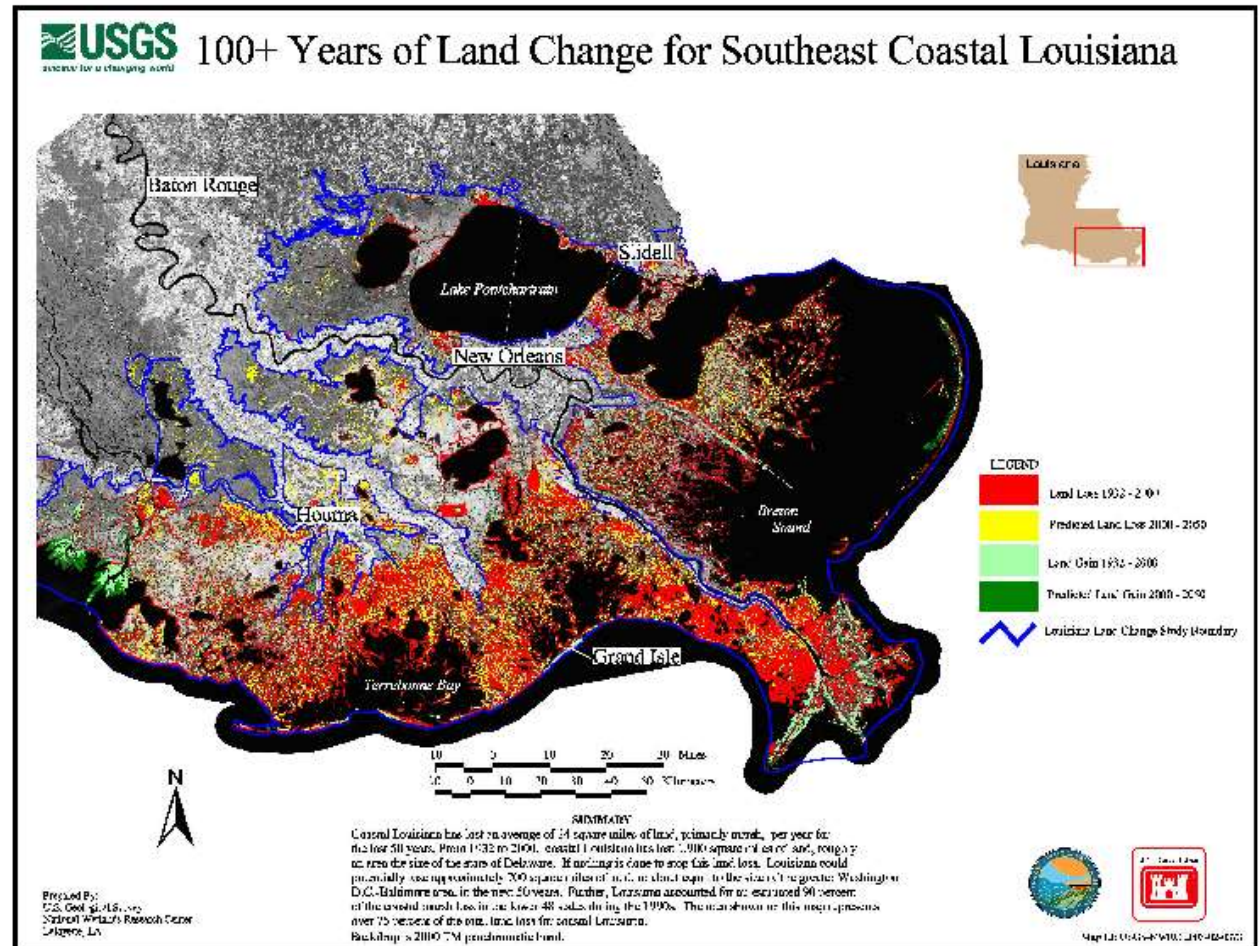
- Risk Communication
- Coastal Erosion and Climate Change
- Operations and Maintenance

Risk Communication

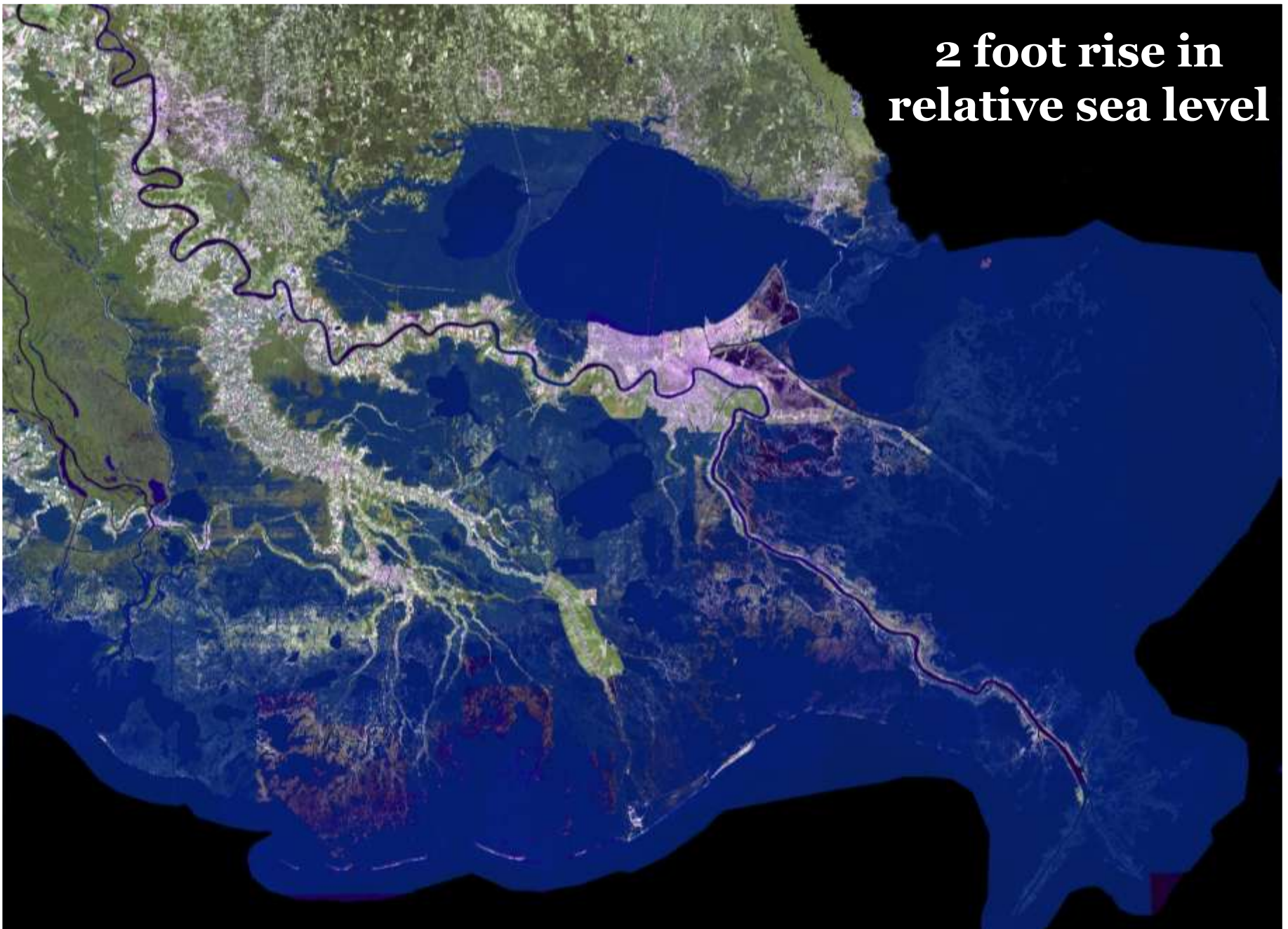


- 100 yr Level of Protection –What does it really mean?
- Preservation of Life is the highest priority
- Still a need for:
 - Emergency Planning
 - Evacuation
 - Flood Insurance
- “Complacency is a force just as strong as Mother Nature” – *Tim Doody, SLFPAE President*

Coastal Erosion, Subsidence and Climate Change



**2 foot rise in
relative sea level**



Traditional Operations and Maintenance Activities



- **Vegetation Management**
- **Embankment Repairs**
- **Drainage Channel Maintenance**
- **Pumping Operations**

- **Fleet Maintenance**
- **Permitting**
- **Inspection and Monitoring**
- **Emergency Response and Recovery**

Non-Traditional O&M



Operations and Maintenance



- Surge Barrier and Seabrook Complex
 - Acquiring Expertise
 - Coordinating with Maritime Interests
 - Funding

Annual Operations and Maintenance

Current Annual O&M Costs:

Lake Borgne Basin	\$ 3.0 Million
Orleans	\$10.6 Million
Standard Average Annual Cost:	<hr/> \$13.6 Million

Estimated O&M Costs 2012 and After:

Standard Average Annual Cost	\$13.6 Million
IHNC-1 (Seabrook)	\$ 2.1 Million
IHNC-2 (Lake Borgne Surge Barrier)	\$ 2.5 Million
Average Annual Cost:	<hr/> \$18.2 Million

Funding Challenges



Water respects no political boundaries – but money does!

Thinking and acting regionally, then there's a taxation challenge.

Working on the Challenges



- Risk Communication
 - Engaging the Public
- Coastal Erosion and Climate Change
 - Louisiana Master Plan
 - SLFPA-E Coastal Advisory Committee
 - Decision Making Framework
- Operations and Maintenance
 - Planning for new O&M
 - O&M Cost Study
 - New Sources of Funding

Southeast Louisiana Flood Protection Authority – East



Questions and Discussions

www.sfpae.com

